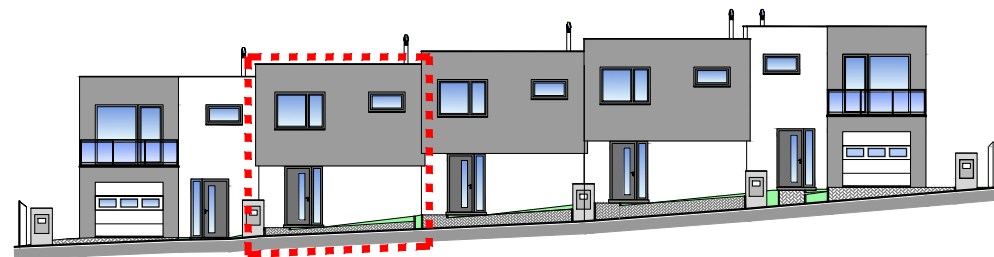
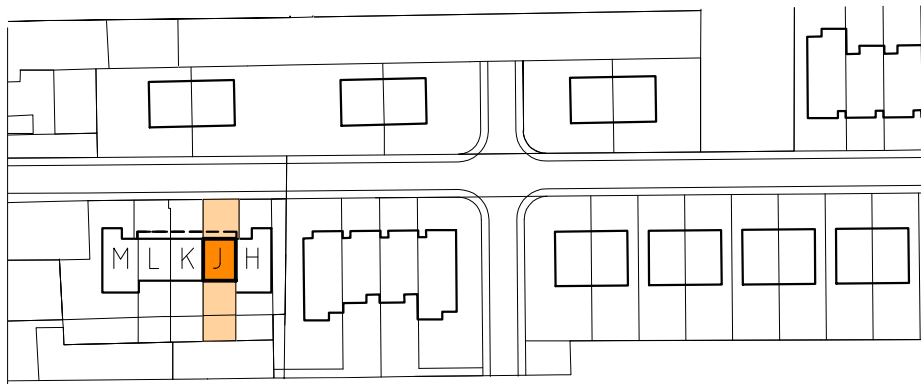
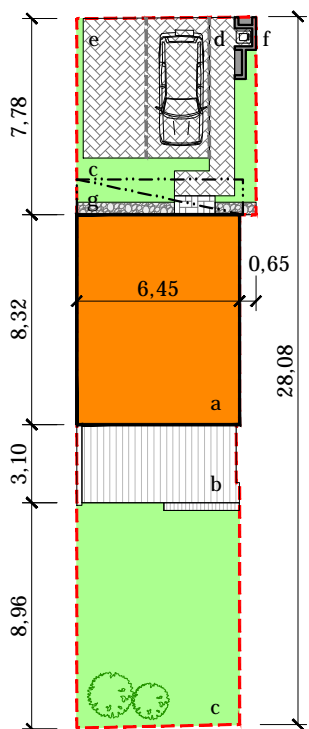


# Radový dom J



pohľad uličný - severovýchodný



- a/ rodinný dom
- b/ terasa
- c/ záhrada
- d/ chodník
- e/ parkovacie miesta - zámková dlažba
- f/ merače energií
- g/ okapový štrkový chodník

## PRÍZEMIE

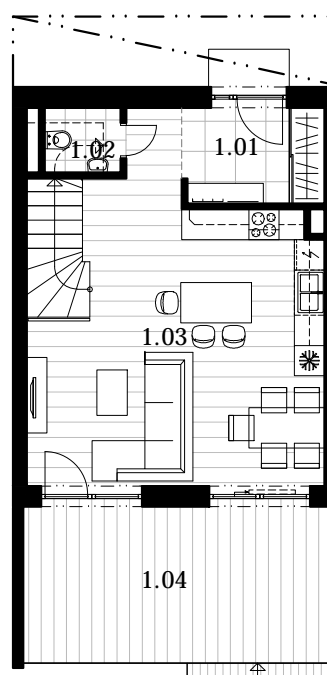
|      |                       |                      |
|------|-----------------------|----------------------|
| 1.01 | Zádvrie               | 5.32 m <sup>2</sup>  |
| 1.02 | WC                    | 1.93 m <sup>2</sup>  |
| 1.03 | Obýv. izba s kuchyňou | 35.55 m <sup>2</sup> |
| 1.04 | Terasa                | 19.96 m <sup>2</sup> |

## POSCHODIE

|      |           |                      |
|------|-----------|----------------------|
| 2.01 | Schodisko | 5.18 m <sup>2</sup>  |
| 2.02 | Chodba    | 4.74 m <sup>2</sup>  |
| 2.03 | Izba      | 11.28 m <sup>2</sup> |
| 2.04 | Izba      | 12.76 m <sup>2</sup> |
| 2.05 | WC        | 1.41 m <sup>2</sup>  |
| 2.06 | Izba      | 10.23 m <sup>2</sup> |
| 2.07 | Kúpeľňa   | 4.06 m <sup>2</sup>  |

|                  |                       |
|------------------|-----------------------|
| Spolu bez terasy | 92.46 m <sup>2</sup>  |
| Spolu            | 112.42 m <sup>2</sup> |
| Plocha pozemku   | 184 m <sup>2</sup>    |

prízemie



poschodie

